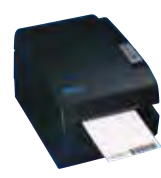






Extraordinary Value!



BUDGET FRIENDLY



POS Printers		BTP-M280A	BTP-M300 / BTP-M300D	BTP-L580II C	BTP-R180II	BTP-R580II	BTP-R681	BTP-R880NPV	BTP-R980III	BTP-R990	BTP-S80	
Printer	Print Method	Impact / Paper Take-Up	Impact – Auto-Cut / Manual Tear	Thermal Label	Thermal	Thermal	Thermal	Thermal	Thermal	2-Side Thermal	Thermal	
	Resolution			203 DPI x 203 DPI	180 DPI x 180 DPI	203 DPI x 203 DPI	203 DPI x 2030 DPI	203 DPI x 180 DPI	203 DPI x 203 DPI	203 DPI x 203 DPI	203 DPI x 180 DPI	
	Print Width	400 (Half Dots) 200 (Full Dots)	400 (Half Dots) 200 (Full Dots)	80mm Maximum	80mm Maximum	80mm Maximum	80mm Maximum	80mm Maximum	80mm Maximum	80mm Maximum	80mm Maximum	
	Print Speed (per Second)	Standard	19.6mm / 4.7 LPS	19.6mm / 4.7 LPS	150mm Label Paper	230mm per Second	230mm per Second	310mm per Second	310mm per Second	310mm per Second	310mm / 2ST 175mm Second	250mm per Second
		Gray Scale			230mm Continuous Paper	150mm per Second	150mm per Second	150mm per Second	150mm per Second	150mm per Second	150mm / 2ST 75 – 100 mm	150mm per Second
		Two Color				120mm per Second	120mm per Second	120mm per Second	120mm per Second	120mm per Second	120mm 2ST 60 – 90mm	120mm per Second
	Memory	RAM	64 KB	2 MB	2 MB	2 MB	2 MB	2 MB	2 MB	2 MB	2 MB	2 MB
		Flash	1 MB	2 MB	2 MB	2 MB	2 MB	4 MB	4 MB	4 MB	4 MB	4 MB
	Data Buffer	Receive Buffer RAM	4 KB	8 KB	64 KB	64 KB	64 K	64 KB	64 KB	64 KB	64 KB	64 KB
		RAM Bitmap	8 KB	8 KB	128 KB	128 KB	128 KB	128 KB	128 KB	128 KB	128 KB	128 KB
Flash Bitmap		128 KB	128 KB	256 KB	256 KB	256 KB	512 KB	512 KB	512 KB	512 KB	512 KB	
Sensors	Top Cover Position / Paper Near End / Paper End / Print Head Overheating	Top Cover Position / Paper Near End / Paper End / Print Head Overheating	Top Cover Position / Paper Near End / Paper End / Label Orientation / TPH Overheating / Print Voltage	Top Cover Position / Paper Near End / Paper End / TPH Position / TPH Overheating / Print Voltage	Top Cover Position / Paper Near End / Paper End / TPH Position / TPH Overheating / Print Voltage	Front Cover Position / Paper End / Paper Near End / Label Transmission	Top Cover Position / Paper Near End / Paper End / TPH Position / TPH Overheating / Print Voltage	Top Cover Position / Paper Near End / Paper End / TPH Position / TPH Overheating / Print Voltage	Top Cover Position / Paper Near End / Paper End / TPH Position / TPH Overheating / Print Voltage / 2ST	Top Cover Position / Paper Near End / Paper End / TPH Position / TPH Overheating / Print Voltage		
Internal Beeper	Non-Programmable	Programmable	Non-Programmable	Programmable	Programmable	Programmable	Programmable	Programmable	Programmable	Programmable		
Command Emulation Supported	ESC / POS™	ESC / POS™	ESC / POS™	ESC / POS™	ESC / POS™	ESC / POS™	ESC / POS™	ESC / POS™	ESC / POS™	ESC / POS™ / NCR		
Paper Cutting Method	Auto-Cutter / Paper Take-Up	Select Full or Partial Cut/Manual Tear	Auto-Cutter Select Full / Partial Cut	Auto-Cutter Select Full / Partial Cut	Auto-Cutter Select Full / Partial Cut	Auto-Cutter Select Full / Partial Cut	Auto-Cutter Select Full / Partial Cut	Auto-Cutter Select Full / Partial Cut	Auto-Cutter Select Full / Partial Cut	Auto-Cutter Select Full / Partial Cut		
Paper Type	Continuous / Marked Paper	Continuous / Marked Paper	Label / Continuous Paper	Continuous / Marked Paper	Continuous / Marked Paper	Continuous / Marked / Label	Continuous / Marked Paper	Continuous / Marked Paper	Continuous / Marked Paper	Continuous / Marked Paper		
Paper Width (mm)	76 / 69.5 / 57.5 ±0.5mm	80 / 76 / 69.5 / 57.5 ±0.5mm	54.5 – 82.5mm	82 / 80 / 76 / 69 / 57 ±0.5mm	54.5mm – 82.5mm	56mm – 82.5mm	54.5mm – 82.5mm	54.5mm – 82.5mm	54.5mm – 82.5mm	54.5mm – 82.5mm		
Maximum Diameter	83mm	83mm	100mm	83mm	100mm	83mm	83mm	83mm	83mm	83mm		
Thickness	0.06 – 0.085mm	0.06 – 0.085mm	0.06 – 0.145mm	0.06 – 0.08mm	0.06 – 0.145mm	0.06 – 0.1mm	0.06 – 0.1mm	0.06 – 0.15mm	0.06 – 0.15mm	0.06 – 0.1mm		
Inking Supply	ERC-38 Cartridge (Black/Red)	ERC-38 Cartridge (Black/Red)										
Characters	Characters Per Line	Font A	33 / 35	33 / 35	42 (80mm) / 37 (58mm)	42 (72mm) / 33 (58mm)	42 (80mm) / 37 (58mm)	53 (80mm) / 38 (58mm)	53 (80mm) / 38 (58mm)	42 (80mm) / 37 (58mm)	42 (80mm) / 37 (58mm)	53 (80mm) / 38 (58mm)
		Font B	40 / 42	40 / 42	56 (80mm) / 49 (58mm)	56 (72mm) / 45 (58mm)	56 (80mm) / 49 (58mm)	71 (80mm) / 51 (58mm)	71 (80mm) / 51 (58mm)	56 (80mm) / 49 (58mm)	56 (80mm) / 49 (58mm)	71 (80mm) / 51 (58mm)
	Character Size	Font A	9 x 9	9 x 9	12 x 24	12 x 24	12 x 24	12 x 24	12 x 24	12 x 24	12 x 24	12 x 24
		Font B	7 x 9	7 x 9	9 x 17	9 x 17	9 x 17	9 x 17	9 x 17	9 x 17	9 x 17	9 x 17
	Character Set	Alphanumeric	95	95	95	95	95	95	95	95	95	95
		International	32	37	14	13	13	13	13	37	37	14
Barcode	Graphic	128 x 8	128 x 12	128 x 57	128 x 56	128 x 56	128 x 56	128 x 56	128 x 57	128 x 57	128 x 68	
	1D			UPC-A / UPC-E / EAN8 / EAN13 / CODABAR / Code39 / Code 93 / Code 128 / ITF		UPC-A / UPC-E / EAN8 / EAN13 / CODABAR / Code39 / Code 93 / Code 128 / ITF		UPC-A / UPC-E / EAN8 / EAN13 / CODABAR / Code39 / Code 93 / Code 128 / ITF		UPC-A / UPC-E / EAN8 / EAN13 / CODABAR / Code39 / Code 93 / Code 128 / ITF		
	2D			PDF417 / QR / MaxiCode / GS1	PDF417 / QR / MaxiCode / GS1	PDF417 / QR / Maxicode	PDF417 / QR / Maxicode		PDF417 / QR / MaxiCode / GS1-DataBar		PDF417 / QR / Maxicode	
Drivers / Interface	Fixed on Board		Cash Drawer +USB	USB	USB+Serial+Ethernet	USB	USB	USB+Serial+Ethernet	Ethernet / Serial / USB	USB	USB+Serial+Ethernet	
	Interface											
	Board Options	Serial / Parallel / Ethernet	Serial / Parallel / Ethernet / Bluetooth / WiFi	Serial / Parallel / Ethernet / Bluetooth / WiFi	Serial / Parallel / Ethernet / Bluetooth / WiFi	Serial / Parallel / Ethernet / Bluetooth / WiFi	Serial / Parallel / Ethernet / Bluetooth / WiFi	Serial / Parallel / Ethernet / WiFi	Serial / Parallel / Ethernet / Bluetooth / WiFi	Serial / Parallel / Ethernet / Bluetooth / WiFi	Serial / Parallel / Ethernet / Bluetooth / WiFi	
	Cash Drawer (Maximum 2 Drawers)	One RJ12 (+24VDC)	One RJ12 (+24VDC)	One RJ12 (+24VDC)	One RJ12 (+24VDC)	One RJ12 (+24VDC)	One RJ12 (+24VDC)	One RJ12 (+24VDC)	One RJ12 (+24VDC)	One RJ12 (+24VDC)	One RJ12 (+24VDC)	
Drivers	Windows 32-bit	XP Pro / XP Home / 2000 Server & Pro	XP Pro / XP Home / 2000 Server / 2000 Pro / POSReady 2009	XP Pro / XP Home / 2000 Server / 2000 Pro / POSReady 2009	XP Pro / XP Home / 2000 Server / 2000 Pro / POSReady 2009	XP Pro / XP Home / 2000 Server / 2000 Pro / POSReady 2009	XP Pro / XP Home / 2000 Server / 2000 Pro / POSReady 2009	XP Pro / XP Home / 2000 Server / 2000 Pro / POSReady 2009	XP Pro / XP Home / 2000 Server / 2000 Pro / POSReady 2009	XP Pro / XP Home / 2000 Server / 2000 Pro / POSReady 2009		
	Windows 64-bit	Server 2012 / XP	Server 2012 / XP	Server 2012 / XP	Server 2012 / XP	Server 2012 / XP	Server 2012 / XP	Server 2012 / XP	Server 2012 / XP	Server 2012 / XP		
	Windows 32 and 64-bit	10 / 8 / 7 / Server 2008 & 2003 / Vista	10 / 8 / 7 / Server 2008 & 2003 / Vista	10 / 8.1 / 8 / 7 / Server 2008 & 2003 / Vista	10 / 8.1 / 8 / 7 / Server 2008 & 2003 / Vista	10 / 8.1 / 8 / 7 / Server 2008 & 2003 / Vista	10 / 8.1 / 8 / 7 / Server 2008 & 2003 / Vista	10 / 8.1 / 8 / 7 / Server 2008 & 2003 / Vista	10 / 8.1 / 8 / 7 / Server 2008 & 2003 / Vista	10 / 8.1 / 8 / 7 / Server 2008 & 2003 / Vista		
Software Development Kit	Linux / OPOS / BYJavaPOS	Windows / BYJavaPOS Linux	Linux / OPOS / BYJavaPOS	Windows / BYJavaPOS Linux	Linux / OPOS / BYJavaPOS	Windows / BYJavaPOS Linux	Linux / OPOS / BYJavaPOS	Windows / BYJavaPOS Linux	Linux / OPOS / BYJavaPOS	Windows / BYJavaPOS Linux		
Reliability	Reliability											
	MTBF	180,000 Hours	180,000 Hours	360,000 Hours	360,000 Hours	360,000 Hours	360,000 Hours	360,000 Hours	360,000 Hours	360,000 Hours	360,000 Hours	
	MCFB	18,000,000 Lines	18,000,000 Lines	70,000,000 Lines	70,000,000 Lines	70,000,000 Lines	70,000,000 Lines	70,000,000 Lines	70,000,000 Lines	70,000,000 Lines	70,000,000 Lines	
	Printhead Life	150,000,000 Characters	150,000,000 Characters	1,000,000 Labels	150 Km	150,000,000 Characters	150,000,000 Characters	150,000,000 Characters	150,000,000 Characters	150,000,000 Characters	150,000,000 Characters	
Power / Operation	Cutter Life	1,500,000 Cuts	1,800,000 Cuts (BTP-M300)	2,000,000 Cuts	1,500,000 Cuts	2,000,000 Cuts	2,000,000 Cuts	2,000,000 Cuts	2,000,000 Cuts	2,000,000 Cuts	2,000,000 Cuts	
	Input	AC	100 – 240V	100 – 240V	100 – 240V	100 – 240V	100 – 240V	100 – 240V	100 – 240V	100 – 240V	100 – 240V	100 – 240V
		Hz	50 – 60	50 – 60	50 – 60	50 – 60	50 – 60	50 – 60	50 – 60	50 – 60	50 – 60	50 – 60
	Output DC	DC	24V ± 5% / 1.5A	24V ± 5% / 1.5A	24V / 2.5A	24V / 1.5A	24V / 2.5A	24V / 2.5A	24V / 2.0A	24V / 2.0A	24V / 2.0A	24V / 2.0A
		Watts	36W	36W	60W	36W	60W	60W	60W	60W	60W	60W
	Operating Temperature	40° – 114°	40° – 114°	40° – 114°	40° – 114°	40° – 114°	40° – 114°	40° – 114°	40° – 114°	40° – 114°	40° – 114°	
Operating Humidity (Non-Condensing)	20% – 90%	20% – 90%	20% – 90%	20% – 90%	20% – 90%	20% – 90%	20% – 90%	20% – 90%	20% – 90%	20% – 90%		
Dimensions (Inches W x H x D)	6-1/4x6-5/8x11-3/4	6-1/4 x 6 x 9-1/2	6-1/8 x 6-5/16 x 8-1/16	5-3/4 x 5-9/16 x 7-11/16	6-1/8 x 6-5/16 x 8-1/16	5-5/16 x 4-1/2 x 8-1/2	5-3/4 x 5-5/16 x 7-5/8	5-3/4 x 5-9/16 x 7-11/16	5-3/4 x 6-1/8 x 8-1/8	5 x 5-1/4 x 5		
Shipping Weight	Each Unit	10.1 lbs.	9 lbs.	7 lbs.	7 lbs.	7 lbs.	7 lbs.	7 lbs.	8.3 lbs.	8.3 lbs.	5 lbs.	
	Master Carton of 4	44.2 lbs.	40 lbs.	30.1 lbs.	30.1 lbs.	30.1 lbs.	30.1 lbs.	30.1 lbs.	35.8 lbs.	35.8 lbs.	30 lbs. (Carton of 6)	
Safety and EMI	FCC / RoHS	FCC / RoHS	FCC / RoHS	FCC / RoHS	FCC / RoHS	FCC / RoHS	FCC / RoHS	FCC / RoHS	FCC / RoHS	FCC / RoHS		

Blank = Not Applicable



Unique LCD Displays  
Errors, Operator Messages,  
and Guides You Through  
Setup and Option Selections



## Put Your Brand on the SAM4s Ellix 40 Printer

Simply replace the SAM4s logo insert with these attractively silk screened customized inserts.



Order Enough Logo Inserts for the Front and Back of the Printer

**Logo Colors** – The logo can be printed on a white or black background. When ordering a custom logo for the first time, provide an electronic file (Adobe Illustrator file is required – .ai) with Pantone color identification numbers for each of the logo colors.

**Detailed ordering information will be added here as it becomes available.**

POS Printers		Ellix 40	GIANT 100	
Printer	Print Method	Thermal	Thermal	
	Resolution	180 DPI x 200 DPI	180 DPI x 180 DPI	
	Print Width	72mm Maximum	72mm Maximum	
	Print Speed (per Second)	Standard	270mm per Second	250mm per Second
		Gray Scale		
		Two Color	100mm per Second	100mm per Second
	Memory	RAM (Standard / Expandable)	64 MB	64 MB
		Flash (Standard / Expandable)	16 MB / 64 MB	16 MB
	Data Buffer	Receive Buffer RAM	4 KB RAM Selectable to 64 KB	4 KB RAM
		RAM Bitmap	12 KB	12 KB
		Flash Bitmap	384 KB Maximum	128 KB Maximum
	LCD Display (Displays Errors, Setup and Option Messages)	Standard		
	Sensors	Paper Near End / Paper End	Paper Near End / Paper End	
Command Emulation Supported	ESC / POS™ / Star™	ESC / POS™ / Star™		
Paper	Paper Type	Continuous Paper / Marked Paper	Continuous Paper / Marked Paper	
	Paper Width (mm)	58mm / 80mm	58mm / 80mm	
	Maximum Diameter	83mm	83mm	
	Thickness	0.06mm ~ 0.08mm	0.06mm ~ 0.08mm	
	Paper Cutting Method	Auto-Cutter	Auto-Cutter	
Characters	Characters Per Line	Font A	42 (80mm) / 30 (58mm)	42 (80mm) / 30 (58mm)
		Font B	56 (80mm) / 40 (58mm)	56 (80mm) / 40 (58mm)
	Character Size	Font A	12 x 24	12 x 24
		Font B	9 x 17	9 x 17
	Character Set	Alphanumeric	95	95
		International	37	37
		Graphic	128 x 11	128 x 31
Barcode	1D	UPC-A / UPC-E / EAN8 / EAN13 / Code39 / Code 93 / Code 128 / ITF / CODABAR / PDF417 / QR Code	UPC-A / UPC-E / EAN8 / EAN13 / Code39 / Code 93 / Code 128 / ITF / CODABAR / PDF417 / QR Code	
	2D			
Drivers / Interface	Interface	Fixed on Board	USB	USB+Serial+Ethernet
		Board Options	Serial / Parallel / Ethernet	
	Cash Drawer (Maximum 2 Drawers)	One RJ11 (+24VDC)	One RJ11 (+24VDC)	
	Operating Systems	Windows 32 bit	Windows / OPOS / JPOS / Cups	Windows / OPOS / JPOS / Cups
Windows 64 bit		Windows / OPOS / JPOS / Cups	Windows / OPOS / JPOS / Cups	
Software Development Kit	Android			
Reliability	Reliability	MCBF	70,000,000 Lines	70,000,000 Lines
		Printhead Life	150,000,000 Characters	150,000,000 Characters
		Cutter Life	1,500,000 Cuts	1,500,000 Cuts
Power / Operation	Input	AC	100 ~ 240V	100 ~ 240V
		Hz	50 ~ 60	50 ~ 60
	Output DC	DC	24V / 2.5A	24V / 2.5A
		Watts	60W	27W
	Operating Temperature	40° ~ 114°		
	Operating Humidity (Non-Condensing)	10% ~ 90%		
	Dimensions (Inches W x H x D)	5-5/8 x 5-3/8 x 7-5/8	5-1/8 x 5-1/4 x 6-1/8	
Shipping Weight	Each Unit	7 lbs.	5 lbs.	
	Master Carton of 4			
Safety and EMI	FCC Class A / CE / RoHS			

Blank = Not Applicable